



LMW®

LAKSHMI MACHINE WORKS LIMITED

Corporate Social Responsibility

Annual Report 21-22



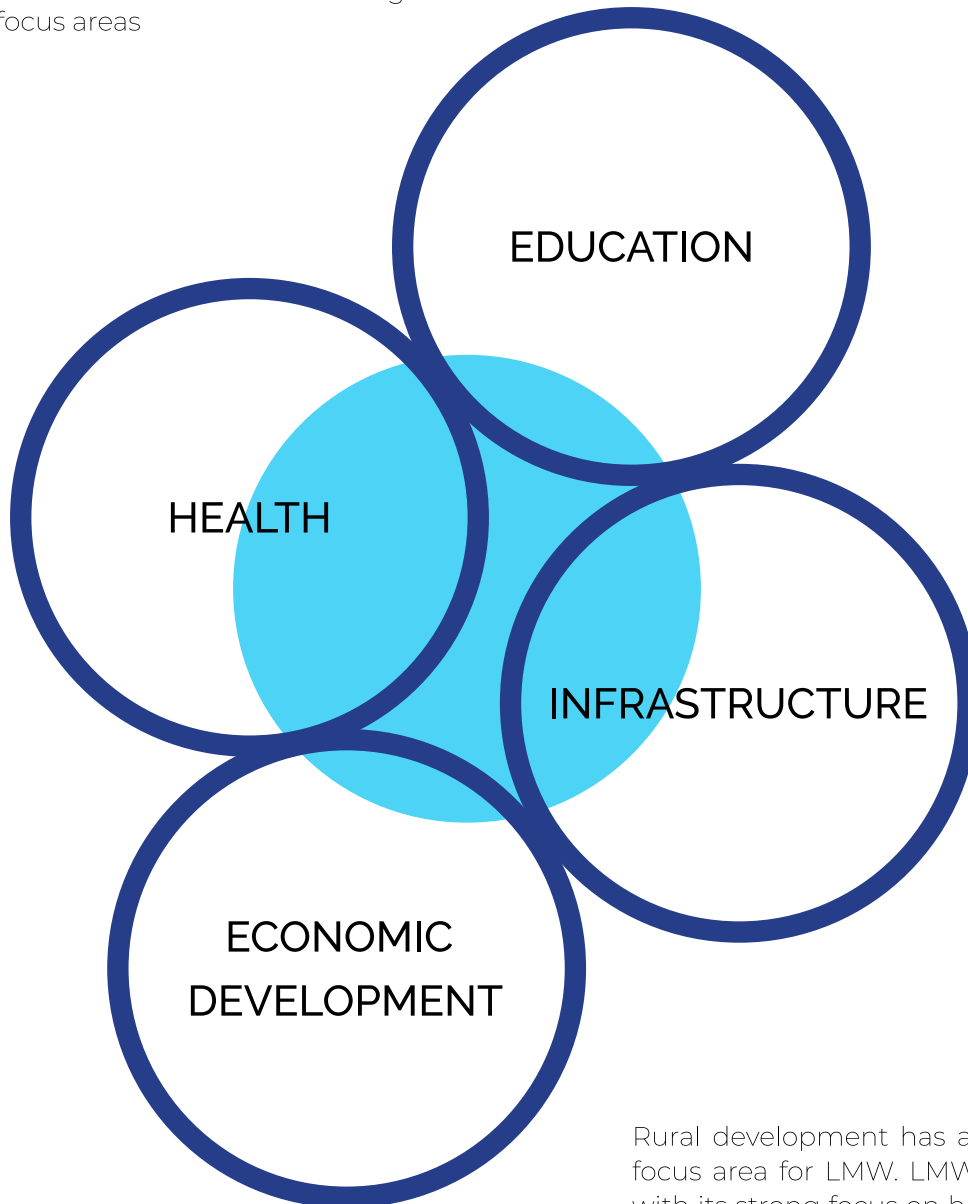
Lakshmi Machine Works Limited fosters the culture of ensuring premium quality, continuous learning, and innovation in its business, meeting the expectations of the stakeholders and the end users at large. Right from its inception, LMW has incorporated the values of trust and responsibility towards the society where it operates. As a responsible corporate entity, LMW contributes towards inclusive growth by supporting and empowering the communities and accelerating development. Lakshmi Machine Works Limited (LMW), under its Corporate Social Responsibility drive, takes up various social initiatives to ensure the economic welfare of weaker social sections and also for the development of infrastructure in the rural areas of Coimbatore.

inside contents

INDEX	Pg.No
Focus Areas	4
2021 - 22 CSR Projects	5
Where we work	6
Spine Surgery, Rehabilitation & Reconstruction Surgeries	7
Sickle Cell Anaemia Intervention Project	8
COVID-19 Relief Support	9
Road Safety & Awareness Project	10
Solar Street Lights Installation	11
Support for House Construction	12
Government School Infrastructure Development	13
Skill Development Centre – HIA	15
Livelihood Development Training Programs	16
Mushroom Cultivation	18
Veterinary Health Check-up Camp	19
Self Help Groups Development Programs	21
Vermicompost Production	23
Agroforestry Tree Plantation	25

OUR FOCUS AREA

LMW's CSR initiatives are conceptualized and implemented based on the following four main focus areas



Rural development has always been a key focus area for LMW. LMW's CSR approach, with its strong focus on holistic, sustainable development principles, believes that for a positive change to become sustainable, the active participation and ownership of the community are vital. We focus on an inclusive model of sustainable development programs, ensuring that the community be themselves the change agent in the path towards progress.

2021 - 22

CSR PROJECTS

CSR Expenditure for the Company taken at 2% of the average net profit for the last three financial years

Rs. 301.18 Lakhs

Amount to be spent as per the mandate

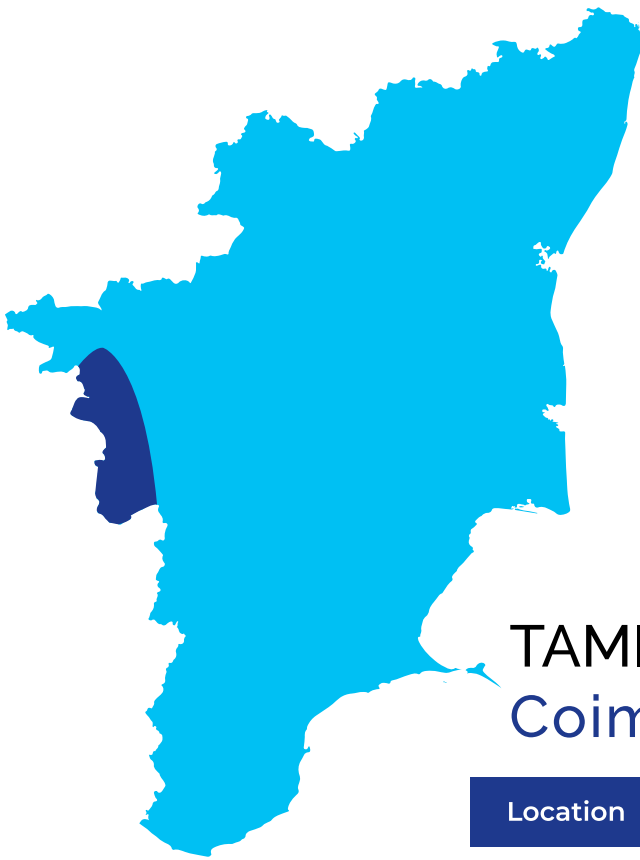
Rs. 308.63 Lakhs

Actual amount spent for various activities

S.No	Projects	Amount (in Rs.)
1	Education, Environment and Poverty Alleviation	1,23,00,000
2	Promotion of Health, Disease Prevention & Covid-19 control support	29,73,632
3	Sickle Cell Anaemia Intervention Project	21,00,000
4	Spine Surgery, Rehabilitation & Reconstructive Surgeries	10,00,000
5	Integrated Village Development Project	55,00,000
6	Road Safety & Awareness Project	4,95,600
7	Public Welfare – Infrastructure Development	3,14,426
8	Housing Project for Tribals	12,00,000
9	Skill Development	49,79,300
	Total	3,08,62,958

Where We Work

Under the Village Development Project, LMW focuses on developing rural communities, particularly that of the Tribal population living in the Coimbatore District. During 2021-22, the prime focus was on the Tribal settlements in Palamalai, Anaikatti Hills & Kandegoundansavadi areas of Coimbatore District.



TAMILNADU Coimbatore

Location	Panchayat	No of villages
Anaikatti	Tholampalayam	23
	Velliangadu	15
	24 Veerapandi	11
	Kemmarampalayam	8
	Nellithurai	5
Palamalai	Naickenpalayam	11
Mavuthampathi	Mavuthampathi	4
Total		77

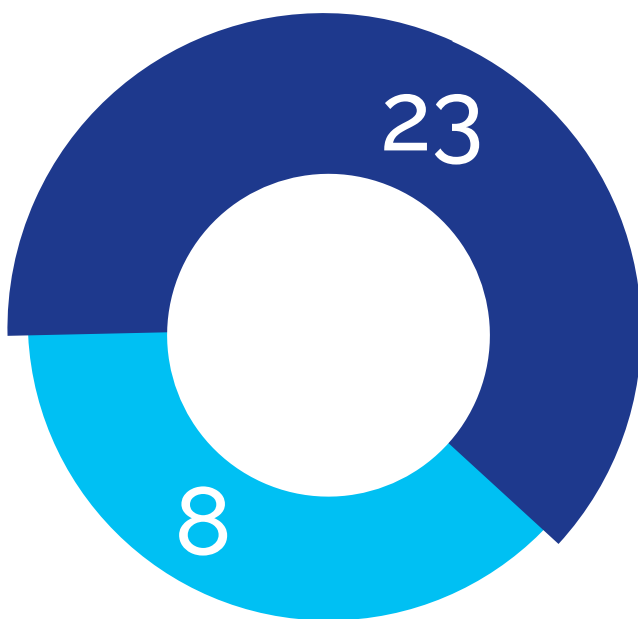
Spine Surgery, Rehabilitation & Reconstruction Surgeries

Lakshmi Machine Works Ltd collaborates with leading hospitals and rehabilitation centres in Coimbatore to support:

- Surgery for spine injury & subsequent rehabilitation.
- Plastic surgery, Hand reconstructive surgery, reconstructive microsurgery & Burns

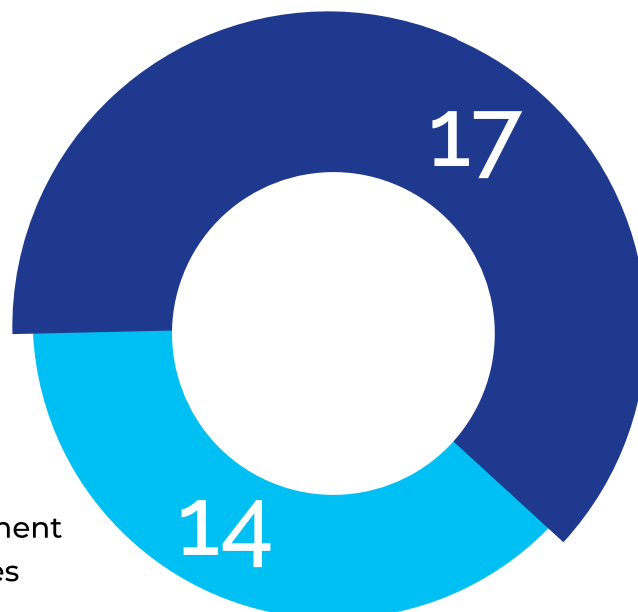
During the rehabilitation process, the patients are supported in vocational skill development to help them in establishing alternative means of income generation to offset the loss of employment. Special equipment such as wheelchairs (motorized/manual), crutches, standing frames etc. are provided to the patients based on the requirements.

Gender based Beneficiaries



■ Male
■ Female

Treatment based Beneficiaries



■ Spine Injury Treatment
■ Corrective Surgeries

Sickle Cell Anaemia Intervention Project

Sickle Cell Anaemia (SCA) is a hereditary anaemia, predominantly seen amongst the tribal population of India. The diagnosis of SCA is done by conducting a blood test known as Sickling test and further testing is by either Hb electrophoresis or by HPLC technique to find out whether the person is heterozygous or homozygous.

LMW has partnered with Nilgiris Adivasi Welfare Association (NAWA) for implementing the Sickle Cell Anaemia Screening and Intervention Project covering the tribal population in the Palamalai & Anaikatti area. The key focus of this program is to screen & support sickle cell patients and carriers of sickle cell diseases through continuous counselling and interventions.

The project focuses on SCA patients of all ages with special attention upon adolescent girl children as they are prone to patriarchal vulnerabilities along with social and economic restrictions. The key highlights of the project are as follows.

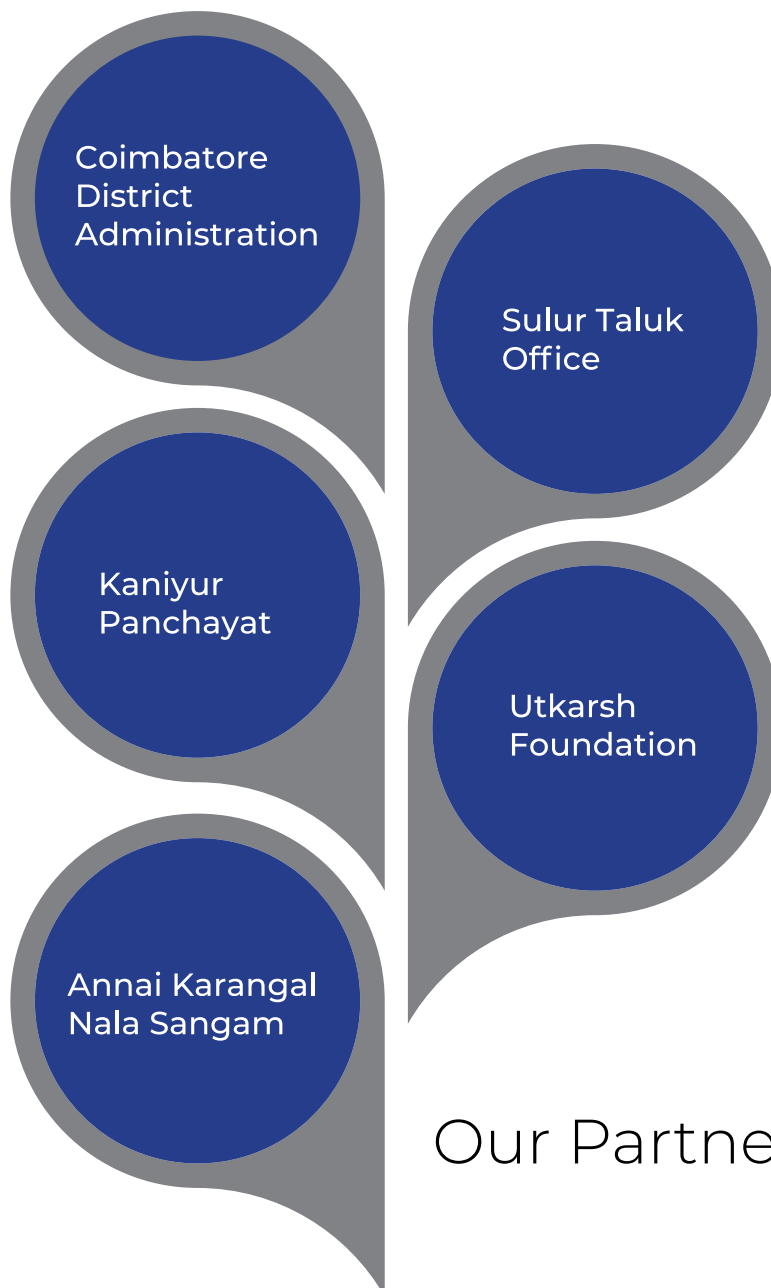


- **38** Sickle Cell Anaemic patients(SS) and **378** Sickle Cell Anaemic Traits (AS) traits were identified from the inception of the project.
- During the year **2021-22**, **5** SS and **178** AS patients were identified.
- A total of **1300 individuals** were screened for Sickle Cell Anaemia.
- Nutrition packages are distributed to the beneficiaries on a biweekly basis.
- Screening of the beneficiaries is done once in **45 days for HB count**, weight.
- **28** SS cases & **143** AS cases improved their HB level & blood count.
- **29** SS & **174** AS persons gained weight.
- Counselling was given to **1920** individuals for creating awareness about the disease and for mitigating the health issues related to the disease.



COVID-19 Relief Support

COVID-19 pandemic had its impact on our society during the year 2021-22 also. The second wave of infection caused economic disruption affecting the society similar to that which happened during the initial outbreak. During the lockdown imposed to control the spread of the disease, people especially the migrant workers faced immense ordeal to fulfil their necessities of food and medical care. Lakshmi Machine Works Ltd partnered with local Government bodies and NGOs to support the development of medical infrastructure facilities and for distribution of food materials. LMW supported the needy through the following partners:



Our Partners

Road Safety & Awareness Project

Road traffic accident-related injuries account for more than one lakh deaths across India. Approximately 3-4% of the Gross National Product is lost in Road Accidents. To create awareness on traffic rules among the public in Coimbatore, LMW collaborates with UYIR Trust to reach out to the public.

As a part of this initiative, cameras were installed in the major road junctions in Coimbatore City for aiding the Traffic Police to identify individuals who disobey traffic rules and to create a sense of awareness on the need to follow the rules. LMW supported UYIR trust in setting up the camera and for maintaining the traffic signals at Athipalayam Pirivu Junction.



Cameras Installed to assist the Traffic Police

Solar Street Lights Installation

The tribal settlements mostly consisting of the Irular community with whom LMW is working with mostly live in the fringe areas of the forest or well within the forest ranges of Coimbatore district. Through various Government schemes free housing, free electricity, subsidized ration etc. are provided for the welfare of these people.

Despite the best efforts of the forest department to mitigate encounters with the wildlife, being located close to the forest areas and in the elephant corridor, wild animals venture into human habitations during the times of drought.

The villages are installed with traditional electrical streetlights. Due to the limited number of these lights, adequate lighting is not available throughout each of the villages resulting in blind spots. To mitigate this scenario, LMW has installed Solar Powered LED Street Lights of high capacity in select villages at strategic locations through which adequate lighting and visibility is available around the villages which helps the people to detect the movement of animals at night. Over the years LMW has installed over 185 solar powered streetlights in the tribal villages located in Palamalai & Anaikatti hills.



For the year 2021-22, 45 such solar powered LED streetlights were installed in Arakadavu, Munukuttai, Puchimarathoor, Irrularpathi, Kemmarampalayam, Colony Pudhur, Kuttaikadu, Kondanurpudhur, Marudhankarai Melpathi, Marudhankarai Kelpathi tribal

Total Lights Covered **185**

Villages Covered **43**



Support For House Construction

Lakshmi Machine Works Ltd through the Naickenpalayam Panchayat supported the construction of houses for the Tribal families in Perukaipathi, Perukaipathi Pudhur, and Perumpathi villages in Palamalai Hills. The houses were constructed under the Tamil Nadu Government's Chief Ministers Solar Powered Green House Scheme, through which beneficiaries are provided with grants to the sum of Rs.3 Lakhs for construction of a house with a Living room, Bedroom, Kitchen, Toilet, & Verandah along with solar lighting system. LMW supported the construction of the house for fifteen families through provision of additional funds to meet the current requirements.

₹ 1.2 Lakhs

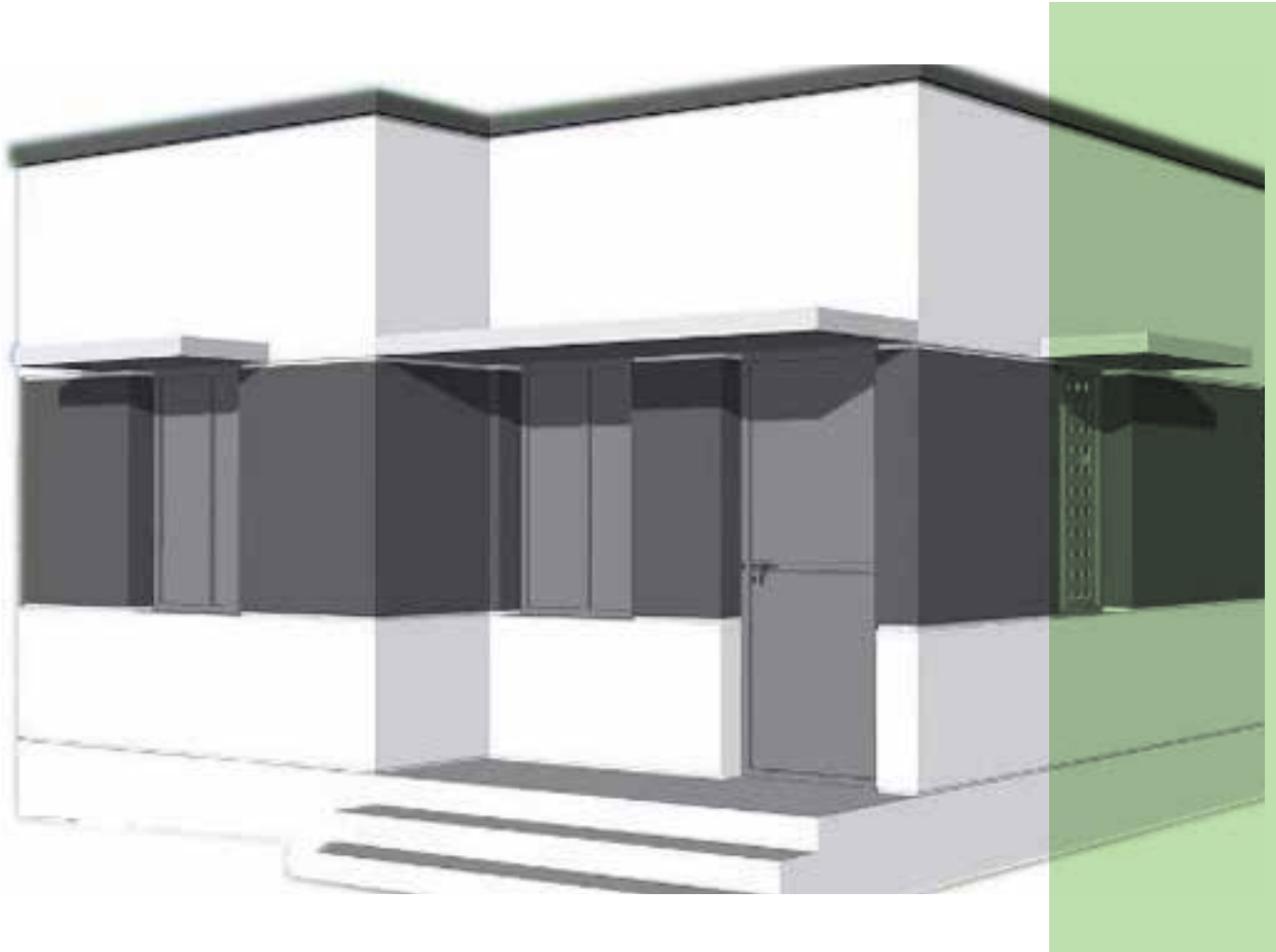
Sum given to the beneficiaries
for construction of a house



Living Room, Bedroom
Kitchen, Toilet & Verandah.



Constructed with solar
lighting system



Government School Infrastructure Development

Lakshmi Machine Works Ltd proactively works towards the development of education facilities particularly for the rural population in and around Coimbatore. LMW believes that the right to quality education is necessary for the children to prosper in life. Good infrastructure in schools is a key factor for sustaining the interest and involvement amongst children to study.

LMW strives to upgrade the schools to be at par with private institutions by providing the funds needed. The local community is also involved in the development activities either through their possible financial or in-kind support.

Parents were also encouraged to participate in the Parents Teachers Association meetings on a regular basis and take part in the educational progress of the child & in the overall development of the school.

Laying vitrified tiles for the classrooms, revamping toilet facilities, drinking water facilities, ramps for classroom access, concrete flooring in essential areas, painting of the campus buildings, supply of computers, projectors, chairs, tables & racks, and construction of compound walls were few of the key activities taken up and completed in these schools.



Total Schools Supported

22

Students Directly
Benefitted

2896

For the year 2021-22, LMW has supported the development of infrastructure in the following Government Schools.

- Panchayat Union Primary School, **Melpaviyur**
- Panchayat Union Primary School, **Kasthuripalayam**
- Corporation Middle School, **Papanaickenpalayam**
- Government High School, **Idikarai**



Skill Development Centre HIA

Education and technical skill development amongst the rural children and youth is a key aspect that needs to be focused to enable and empower them to aspire for a better future. Lakshmi Machine Works Ltd under the CSR initiative has supported in the infra- structure development of the Skill Development Centre established by the Hosur Industries Association.

Two advanced CNC machines - Smarturn Ultra CNC Turning Centre and JV 40 VMC were provided to the centre for imparting first-hand training to the students. The centre caters to the skill development needs for the rural youth in Hosur and the surrounding areas. The training will be provided free of cost to the beneficiaries.



Smarturn Ultra CNC Turning Centre & JV 40 VMC

Provided for training to students



Livelihood Development Training Programs

For enhancing the income generation capacity of the tribal settlements in the Anaikatti, Palamalai & Mavuthampathi villages various training programs have been conducted during the year 2021-22. As such twelve such programs were organized benefiting 108 individuals

Training Program	No of Programs	Total Beneficiaries
Mushroom Cultivation	3	34
Masala Powder Making	2	16
Vermicompost Production	7	58

Overall reach 2017-2022	
No. of Training Program	32
No. of Families Covered	540
Total No. of Beneficiaries	559
No. of Male beneficiaries	101
No. of Female beneficiaries	458





Mushroom Cultivation

Mushroom Cultivation was promoted as one of the less labor-intensive alternative income generation activity for the tribals particularly for the women population in the area we work with. Based on the positive feedback from the beneficiaries and the marketing viability, the program was expanded in the villages of Anaikatti and Palamalai. Around forty-nine tribals are practicing mushroom cultivation on a regular basis. They generally use a part of their house for the cultivation process, which very much limits their production capacity.

To further develop the trade and increase the production capacity to nearly 1 ton per month, we identified 25 individuals who are actively performing the cultivation process. The target beneficiaries are provided with separate sheds to do mushroom cultivation. With this the beneficiaries can produce nearly 30 to 50 kgs of mushroom per month. As such 18 mushroom cultivation sheds have been constructed. During the year 2021-22, a total of 4,136 kgs of Mushrooms were produced resulting in an additional income generation of Rs.8,29,250/-.

4,136 Kgs

Mushrooms were produced

₹ 8 Lakhs

Roughly the total income generated



Veterinary Health Check-up Camp

Animal husbandry is a major occupation of the tribal people living in the Palamalai and Anaikatti areas. Cattle and goat rearing is predominantly seen in these tribal villages.

To ensure the health of the livestock, veterinary health camps were organized in the villages in association with the Animal Husbandry Department and Forest Department. Vaccination against the Foot & Mouth disease was administered to the livestock and medicines for general medical conditions for the cattle, goats and poultry were distributed.

During the year 2021-22, 12 camps under the Kalnadai Paramarippu Thittam and sixty-two camps for Foot & Mouth Disease Vaccination were conducted through which 5563 cattle, 1769 goats, 594 poultry were treated benefitting 938 individuals.

Overall reach 2017-2022

No. of Camps	192
No. of Beneficiaries	2488
No. of Cattle treated	13,095
No. of Goats treated	5532
No. of Poultry treated	4026





Self Help Groups Development Programs

Self Help Groups play a vital role in the economic development of rural women. Besides imparting the habit of savings, it also provides the beneficiaries with the opportunity to avail loans at subsidized rates and utilize them for developing various income generation activities. LMW supports the SHGs by providing them with capacity development programs, accounts maintenance and coordinating with the government entities for availing loans & grants to develop their income generation capacity.

LMW currently supports 119 SHGs directly benefiting 1590 individuals. During the year 2021-22, 18 new Entrepreneur SHGs and 2 Producers Group were formed under the Tamil Nadu Rural Transformation Project.

Also, through LMW's intervention a total of Rs.7,55,000/- has been disbursed through 'Magalir Thittam' and Tamil Nadu Rural Transformation Project benefiting 88 members from 8 SHGs. Trades such as artificial jewelry making, mushroom cultivation, masala powder making, harvesting forest products were done through the SHGs.

₹ 8 Lakhs
disbursed through 'Magalir Thittam'

1590
Members directly benefitted





Vermicompost Production



LMW promotes organic farming methods among the farmers for developing sustainable and healthy farming practices. As a part of this initiative, the Vermicomposting process is introduced to individuals who have a considerable number of livestock. This activity can be easily performed with available raw materials and facilities. The compost thus obtained can be utilized in their own farms and also sold to other farmers interested in organic farming. A total of fifteen vermicomposting bags were provided to support the villagers in production of vermicompost in their respective places.



Agroforestry Tree Plantation

Farming in the tribal settlements is mostly seasonal as they are dependent on rainfall to cultivate crops as the options for open well or bore well is limited due to the terrain and economic conditions of the people. As a source for additional income, agroforestry model of tree plantation was promoted among the active & interested farmers.

Through this method timber, shade and fruit tree varieties were planted in the farmlands. The tree plantation is done in such a way that intercropping and regular cultivation of traditional crops can also be done. Trees namely Silver Oak, Malai Vembu, Mahogany were provided as timber value varieties along with fruits trees namely Lemon, Pomegranate and Sapota. A total of 3030 saplings were distributed and planted in the lands of sixty-five beneficiaries.

For ten individuals in Kuliur village, 100 jasmine saplings were provided for planting in their farmland. The jasmine flowers harvested are sent to the perfume production factories near Karamadai.

S.No	Village	No. of saplings planted	No. of beneficiary
1	Kuliur	1000	10
2	Arakadavu	900	20
3	Sorandi	810	18
4	Mannar	225	5
5	Govanur	225	5
6	Kuttaikadu	390	6
7	Alankandi	350	6
8	Copanari	130	5
TOTAL		4030	75









LMW[®]

LAKSHMI MACHINE WORKS LIMITED

34-A, Kamaraj Road, Coimbatore - 641 018

P : +91 422 7198100 | E: csr@lmw.co.in

www.lmwglobal.com